

Архангельск (8182)63-90-72
Астана (7172)727-132
Астрахань (8512)99-46-04
Барнаул (3852)73-04-60
Белгород (4722)40-23-64
Брянск (4832)59-03-52
Владивосток (423)249-28-31
Волгоград (844)278-03-48
Вологда (8172)26-41-59
Воронеж (473)204-51-73
Екатеринбург (343)384-55-89
Иваново (4932)77-34-06

Ижевск (3412)26-03-58
Иркутск (395)279-98-46
Казань (843)206-01-48
Калининград (4012)72-03-81
Калуга (4842)92-23-67
Кемерово (3842)65-04-62
Киров (8332)68-02-04
Краснодар (861)203-40-90
Красноярск (391)204-63-61
Курск (4712)77-13-04
Липецк (4742)52-20-81
Киргизия (996)312-96-26-47

Магнитогорск (3519)55-03-13
Москва (495)268-04-70
Мурманск (8152)59-64-93
Набережные Челны (8552)20-53-41
Нижний Новгород (831)429-08-12
Новокузнецк (3843)20-46-81
Новосибирск (383)227-86-73
Омск (3812)21-46-40
Орел (4862)44-53-42
Оренбург (3532)37-68-04
Пенза (8412)22-31-16
Россия (495)268-04-70

Пермь (342)205-81-47
Ростов-на-Дону (863)308-18-15
Рязань (4912)46-61-64
Самара (846)206-03-16
Санкт-Петербург (812)309-46-40
Саратов (845)249-38-78
Севастополь (8692)22-31-93
Симферополь (3652)67-13-56
Смоленск (4812)29-41-54
Сочи (862)225-72-31
Ставрополь (8652)20-65-13
Казахстан (772)734-952-31

Сургут (3462)77-98-35
Тверь (4822)63-31-35
Томск (3822)98-41-53
Тула (4872)74-02-29
Тюмень (3452)66-21-18
Ульяновск (8422)24-23-59
Уфа (347)229-48-12
Хабаровск (4212)92-98-04
Челябинск (351)202-03-61
Череповец (8202)49-02-64
Ярославль (4852)69-52-93

<https://fanar.nt-rt.ru/> || frk@nt-rt.ru

MasterDRILL

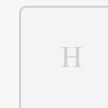
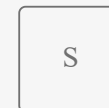
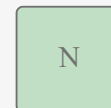
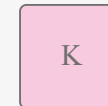
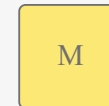
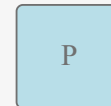
The MasterDRILL VHM drills are tools designed for machining steel, stainless steel, cast iron, non-ferrous metals, and heat-resistant alloys.

The tools are micromachined to protect the cutting edges from chipping.




The presented variants are equipped with an internal supply of IK coolant.



Application



Variants

Variant	Working diameter tolerance d_1	Point angle	Execution standard
 3xD VHM IK AT	m7	140°	DIN-6537
 5xD VHM IK AT	m7	140°	DIN-6537
 8xD VHM IK AT	m7	140°	DIN-6537

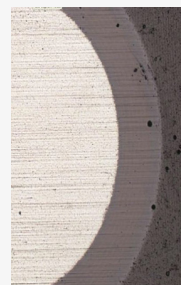
MasterDRILL 3xD VHM IK AT



3xD VHM IK AT

The most efficient machining of a wide range of materials.

Protection



Tools are protected against wear and tear by AT coat developed by Fanar High Al content in AlTiN coat results in additional lubrication during the processing.

Dimensions

Index	$\varnothing d_1$	For taps	For forming taps	l_1	l_2	$\varnothing d_2 h_6$
W9-604M33-0300	3,00			62	20	6,0
W9-604M33-0310	3,10			62	20	6,0
W9-604M33-0320	3,20			62	20	6,0

W9-604M33-0325	3,25		M3,5	62	20	6,0
W9-604M33-0330	3,30	M4		62	20	6,0
W9-604M33-0340	3,40			62	20	6,0
W9-604M33-0350	3,50	M4x0,5		62	20	6,0
W9-604M33-0360	3,60			62	20	6,0
W9-604M33-0370	3,70	M4,5	M4	62	20	6,0
W9-604M33-0380	3,80			66	24	6,0
W9-604M33-0390	3,90			66	24	6,0

W9-604M33-0400	4,00			66	24	6,0
W9-604M33-0410	4,10			66	24	6,0
W9-604M33-0420	4,20	M5	M4,5	66	24	6,0
W9-604M33-0430	4,30			66	24	6,0
W9-604M33-0440	4,40			66	24	6,0
W9-604M33-0450	4,50	M5x0,5		66	24	6,0
W9-604M33-0460	4,60	M5,5		66	24	6,0
W9-604M33-0465	4,65		M5	66	24	6,0

W9-604M33-0470	4,70			66	24	6,0
W9-604M33-0480	4,80			66	28	6,0
W9-604M33-0490	4,90			66	28	6,0
W9-604M33-0500	5,00	M6		66	28	6,0
W9-604M33-0510	5,10		M5,5	66	28	6,0
W9-604M33-0520	5,20	M6x0,75		66	28	6,0
W9-604M33-0530	5,30			66	28	6,0
W9-604M33-0540	5,40			66	28	6,0

W9-604M33-0550	5,50		66	28	6,0
W9-604M33-0560	5,60	M6	66	28	6,0
W9-604M33-0570	5,70		66	28	6,0
W9-604M33-0580	5,80		66	28	6,0
W9-604M33-0590	5,90		66	28	6,0
W9-604M33-0600	6,00	M7	66	28	6,0
W9-604M33-0610	6,10		79	34	8,0
W9-604M33-0620	6,20	M7x0,75	79	34	8,0

W9-604M33-0630	6,30			79	34	8,0
W9-604M33-0640	6,40			79	34	8,0
W9-604M33-0650	6,50			79	34	8,0
W9-604M33-0660	6,60		M7	79	34	8,0
W9-604M33-0670	6,70			79	34	8,0
W9-604M33-0680	6,80		M8	79	34	8,0
W9-604M33-0690	6,90			79	34	8,0
W9-604M33-0700	7,00		M8x1	79	34	8,0

W9-604M33-0710	7,10			79	41	8,0
W9-604M33-0720	7,20	M8x0,75		79	41	8,0
W9-604M33-0730	7,30			79	41	8,0
W9-604M33-0740	7,40			79	41	8,0
W9-604M33-0745	7,45		M8	79	41	8,0
W9-604M33-0750	7,50			79	41	8,0
W9-604M33-0760	7,60		M8x1	79	41	8,0
W9-604M33-0770	7,70			79	41	8,0

W9-604M33-0780	7,80	M9	79	41	8,0	
W9-604M33-0790	7,90		79	41	8,0	
W9-604M33-0800	8,00	M9x1	79	41	8,0	
W9-604M33-0810	8,10		89	47	10,0	
W9-604M33-0820	8,20	M9x0,75	89	47	10,0	
W9-604M33-0830	8,30		89	47	10,0	
W9-604M33-0840	8,40		89	47	10,0	
W9-604M33-0845	8,45		M9	89	47	10,0

W9-604M33-0850	8,50	M10		89	47	10,0
W9-604M33-0860	8,60		M9x1	89	47	10,0
W9-604M33-0870	8,70		M9x0,75	89	47	10,0
W9-604M33-0880	8,80	M10x1,25		89	47	10,0
W9-604M33-0890	8,90			89	47	10,0
W9-604M33-0900	9,00	M10x1		89	47	10,0
W9-604M33-0910	9,10			89	47	10,0
W9-604M33-0920	9,20	M10x0,75		89	47	10,0

W9-604M33-0930	9,30		89	47	10,0
W9-604M33-0935	9,35	M10	89	47	10,0
W9-604M33-0940	9,40		89	47	10,0
W9-604M33-0945	9,45	M10x1,25	89	47	10,0
W9-604M33-0950	9,50	M11	89	47	10,0
W9-604M33-0960	9,60	M10x1	89	47	10,0
W9-604M33-0970	9,70	M10x0,75	89	47	10,0
W9-604M33-0980	9,80		89	47	10,0

W9-604M33-0990	9,90			89	47	10,0
W9-604M33-1000	10,00	M11x1		89	47	10,0
W9-604M33-1010	10,10			102	55	12,0
W9-604M33-1020	10,20	M12		102	55	12,0
W9-604M33-1030	10,30			102	55	12,0
W9-604M33-1040	10,40			102	55	12,0
W9-604M33-1050	10,50	M12x1,5		102	55	12,0
W9-604M33-1060	10,60		M11x1	102	55	12,0

W9-604M33-1070	10,70			102	55	12,0
W9-604M33-1080	10,80	M12x1,25		102	55	12,0
W9-604M33-1090	10,90			102	55	12,0
W9-604M33-1100	11,00	M12x1		102	55	12,0
W9-604M33-1110	11,10			102	55	12,0
W9-604M33-1120	11,20			102	55	12,0
W9-604M33-1125	11,25		M12	102	55	12,0
W9-604M33-1130	11,30			102	55	12,0

W9-604M33-1135	11,35	M12x1,5	102	55	12,0
W9-604M33-1140	11,4		102	55	12,0
W9-604M33-1145	11,5	M12x1,25	102	55	12,0
W9-604M33-1150	11,5		102	55	12,0
W9-604M33-1160	11,6	M12x1	102	55	12,0
W9-604M33-1170	11,7		102	55	12,0
W9-604M33-1180	11,8		102	55	12,0
W9-604M33-1190	11,9		102	55	12,0

W9-604M33-1200	12,0	M14		102	55	12,0
W9-604M33-1230	12,3			107	60	14,0
W9-604M33-1250	12,5	M14x1,5		107	60	14,0
W9-604M33-1280	12,8	M14x1,25		107	60	14,0
W9-604M33-1300	13,0	M14x1	M14	107	60	14,0
W9-604M33-1350	13,5			107	60	14,0
W9-604M33-1380	13,8			107	60	14,0
W9-604M33-1400	14,0	M16; M15x1		107	60	14,0

W9-604M33-1450	14,5	M16x1,5		115	65	16,0
W9-604M33-1480	14,8			115	65	16,0
W9-604M33-1500	15,0	M16x1	M16	115	65	16,0
W9-604M33-1535	15,4		M16x1,5	115	65	16,0
W9-604M33-1550	15,5	M18		115	65	16,0
W9-604M33-1580	15,8			115	65	16,0
W9-604M33-1600	16,0	M18x2		115	65	16,0
W9-604M33-1650	16,5	M18x1,5		123	73	18,0

W9-604M33-1680	16,8		M18	123	73	18,0
W9-604M33-1700	17,0	M18x1		123	73	18,0
W9-604M33-1735	17,4		M18x1,5	123	73	18,0
W9-604M33-1750	17,5	M20		123	73	18,0
W9-604M33-1780	17,8			123	73	18,0
W9-604M33-1800	18,0	M20x2		123	73	18,0
W9-604M33-1850	18,5	M20x1,5		131	79	20,0
W9-604M33-1880	18,8		M20	131	79	20,0

W9-604M33-1900	19,0	M20x1	131	79	20,0
W9-604M33-1935	19,4	M20x1,5	131	79	20,0
W9-604M33-1950	19,5	M22	131	79	20,0
W9-604M33-1980	19,8		131	79	20,0
W9-604M33-2000	20,0	M22x2	131	79	20,0

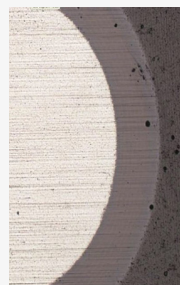
MasterDRILL 5xD VHM IK AT



5xD VHM IK AT

The most efficient machining of a wide range of materials.

Protection



Tools are protected against wear and tear by AT coat developed by Fanar High Al content in AlTiN coat results in additional lubrication during the processing.

Dimensions

Index	$\varnothing d_1$	For taps	For forming taps	l_1	l_2	$\varnothing d_2 h_6$
W9-614M33-0300	3,00			66	28	6,0
W9-614M33-0310	3,10			66	28	6,0
W9-614M33-0320	3,20			66	28	6,0

W9-614M33-0325	3,25		M3,5	66	28	6,0
W9-614M33-0330	3,30	M4		66	28	6,0
W9-614M33-0340	3,40			66	28	6,0
W9-614M33-0350	3,50	M4x0,5		66	28	6,0
W9-614M33-0360	3,60			66	28	6,0
W9-614M33-0370	3,70	M4,5	M4	66	28	6,0
W9-614M33-0380	3,80			74	36	6,0
W9-614M33-0390	3,90			74	36	6,0

W9-614M33-0400	4,00			74	36	6,0
W9-614M33-0410	4,10			74	36	6,0
W9-614M33-0420	4,20	M5	M4,5	74	36	6,0
W9-614M33-0430	4,30			74	36	6,0
W9-614M33-0440	4,40			74	36	6,0
W9-614M33-0450	4,50	M5x0,5		74	36	6,0
W9-614M33-0460	4,60	M5,5		74	36	6,0
W9-614M33-0465	4,65		M5	74	36	6,0

W9-614M33-0470	4,70			74	36	6,0
W9-614M33-0480	4,80			82	44	6,0
W9-614M33-0490	4,90			82	44	6,0
W9-614M33-0500	5,00	M6		82	44	6,0
W9-614M33-0510	5,10		M5,5	82	44	6,0
W9-614M33-0520	5,20	M6x0,75		82	44	6,0
W9-614M33-0530	5,30			82	44	6,0
W9-614M33-0540	5,40			82	44	6,0

W9-614M33-0550	5,50		82	44	6,0
W9-614M33-0560	5,60	M6	82	44	6,0
W9-614M33-0570	5,70		82	44	6,0
W9-614M33-0580	5,80		82	44	6,0
W9-614M33-0590	5,90		82	44	6,0
W9-614M33-0600	6,00	M7	82	44	6,0
W9-614M33-0610	6,10		91	53	8,0
W9-614M33-0620	6,20	M7x0,75	91	53	8,0

W9-614M33-0630	6,30		91	53	8,0
W9-614M33-0640	6,40		91	53	8,0
W9-614M33-0650	6,50		91	53	8,0
W9-614M33-0660	6,60	M7	91	53	8,0
W9-614M33-0670	6,70		91	53	8,0
W9-614M33-0680	6,80	M8	91	53	8,0
W9-614M33-0690	6,90		91	53	8,0
W9-614M33-0700	7,00	M8x1	91	53	8,0

W9-614M33-0710	7,10			91	53	8,0
W9-614M33-0720	7,20	M8x0,75		91	53	8,0
W9-614M33-0730	7,30			91	53	8,0
W9-614M33-0740	7,40			91	53	8,0
W9-614M33-0745	7,45		M8	91	53	8,0
W9-614M33-0750	7,50			91	53	8,0
W9-614M33-0760	7,60		M8x1	91	53	8,0
W9-614M33-0770	7,70			91	53	8,0

W9-614M33-0780	7,80	M9	91	53	8,0
W9-614M33-0790	7,90		91	53	8,0
W9-614M33-0800	8,00	M9x1	91	53	8,0
W9-614M33-0810	8,10		103	61	10,0
W9-614M33-0820	8,20	M9x0,75	103	61	10,0
W9-614M33-0830	8,30		103	61	10,0
W9-614M33-0840	8,40		103	61	10,0
W9-614M33-0845	8,45	M9	103	61	10,0

W9-614M33-0850	8,50	M10		103	61	10,0
W9-614M33-0860	8,60		M9x1	103	61	10,0
W9-614M33-0870	8,70		M9x0,75	103	61	10,0
W9-614M33-0880	8,80	M10x1,25		103	61	10,0
W9-614M33-0890	8,90			103	61	10,0
W9-614M33-0900	9,00	M10x1		103	61	10,0
W9-614M33-0910	9,10			103	61	10,0
W9-614M33-0920	9,20	M10x0,75		103	61	10,0

W9-614M33-0930	9,30		103	61	10,0
W9-614M33-0935	9,35	M10	103	61	10,0
W9-614M33-0940	9,40		103	61	10,0
W9-614M33-0945	9,45	M10x1,25	103	61	10,0
W9-614M33-0950	9,50	M11	103	61	10,0
W9-614M33-0960	9,60	M10x1	103	61	10,0
W9-614M33-0970	9,70	M10x0,75	103	61	10,0
W9-614M33-0980	9,80		103	61	10,0

W9-614M33-0990	9,90			103	61	10,0
W9-614M33-1000	10,00	M11x1		103	61	10,0
W9-614M33-1010	10,10			118	71	12,0
W9-614M33-1020	10,20	M12		118	71	12,0
W9-614M33-1030	10,30			118	71	12,0
W9-614M33-1040	10,40			118	71	12,0
W9-614M33-1050	10,50	M12x1,5		118	71	12,0
W9-614M33-1060	10,60		M11x1	118	71	12,0

W9-614M33-1070	10,70			118	71	12,0
W9-614M33-1080	10,80	M12x1,25		118	71	12,0
W9-614M33-1090	10,90			118	71	12,0
W9-614M33-1100	11,00	M12x1		118	71	12,0
W9-614M33-1110	11,10			118	71	12,0
W9-614M33-1120	11,20			118	71	12,0
W9-614M33-1125	11,25		M12	118	71	12,0
W9-614M33-1130	11,30			118	71	12,0

W9-614M33-1135	11,35	M12,1,5	118	71	12,0
W9-614M33-1140	11,40		118	71	12,0
W9-614M33-1145	11,45	M12x1,25	118	71	12,0
W9-614M33-1150	11,50		118	71	12,0
W9-614M33-1160	11,60	M12x1	118	71	12,0
W9-614M33-1170	11,70		118	71	12,0
W9-614M33-1180	11,80		118	71	12,0
W9-614M33-1190	11,90		118	71	12,0

W9-614M33-1200	12,00	M14		118	71	12,0
W9-614M33-1230	12,30			124	77	14,0
W9-614M33-1250	12,50	M14x1,5		124	77	14,0
W9-614M33-1280	12,80	M14x1,25		124	77	14,0
W9-614M33-1300	13,00	M14x1	M14	124	77	14,0
W9-614M33-1350	13,50			124	77	14,0
W9-614M33-1380	13,80			124	77	14,0
W9-614M33-1400	14,00	M16; M15x1		124	77	14,0

W9-614M33-1450	14,50	M16x1,5		133	83	16,0
W9-614M33-1480	14,80			133	83	16,0
W9-614M33-1500	15,00	M16x1	M16	133	83	16,0
W9-614M33-1535	15,35		M16x1,5	133	83	16,0
W9-614M33-1550	15,50	M18		133	83	16,0
W9-614M33-1580	15,80			133	83	16,0
W9-614M33-1600	16,00	M18x2		133	83	16,0
W9-614M33-1650	16,50	M18x1,5		143	93	18,0

W9-614M33-1680	16,80		M18	143	93	18,0
W9-614M33-1700	17,00	M18x1		143	93	18,0
W9-614M33-1735	17,35		M18x1,5	143	93	18,0
W9-614M33-1750	17,50	M20		143	93	18,0
W9-614M33-1780	17,80			143	93	18,0
W9-614M33-1800	18,00	M20x2		143	93	18,0
W9-614M33-1850	18,50	M20x1,5		153	101	20,0
W9-614M33-1880	18,80		M20	153	101	20,0

W9-614M33-1900	19,00	M20x1		153	101	20,0
W9-614M33-1935	19,35		M20x1,5	153	101	20,0
W9-614M33-1950	19,50	M22		153	101	20,0
W9-614M33-1980	19,80			153	101	20,0
W9-614M33-2000	20,00	M22x2		153	101	20,0

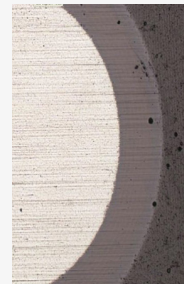
MasterDRILL 8xD VHM IK AT



8xD VHM IK AT

The most efficient machining of a wide range of materials.

Protection



Tools are protected against wear and tear by AT coat developed by Fanar. High Al content in AlTiN coat results in additional lubrication during the processing.

Dimensions

Index	$\varnothing d_1$	For taps	For forming taps	l_1	l_2	$\varnothing d_2 h_6$
W9-624063-0300	3,00			72	34	6,0
W9-624063-0310	3,10			72	34	6,0
W9-624063-0320	3,20			72	34	6,0

W9-624063-0330	3,30	M4		72	34	6,0
W9-624063-0340	3,40			72	34	6,0
W9-624063-0350	3,50	M4x0,5		72	34	6,0
W9-624063-0360	3,60			72	34	6,0
W9-624063-0370	3,70	M4,5	M4	72	34	6,0
W9-624063-0380	3,80	M4x0,5		81	43	6,0
W9-624063-0390	3,90			81	43	6,0
W9-624063-0400	4,00			81	43	6,0

W9-624063-0410	4,10			81	43	6,0
W9-624063-0420	4,20	M5	M4,5	81	43	6,0
W9-624063-0430	4,30			81	43	6,0
W9-624063-0440	4,40			81	43	6,0
W9-624063-0450	4,50	M5x0,5		81	43	6,0
W9-624063-0460	4,60	M5,5		81	43	6,0
W9-624063-0470	4,70			81	43	6,0
W9-624063-0480	4,80	M5x0,5		95	57	6,0

W9-624063-0490	4,90			95	57	6,0
W9-624063-0500	5,00	M6		95	57	6,0
W9-624063-0510	5,10		M5,5	95	57	6,0
W9-624063-0520	5,20	M6x0,75		95	57	6,0
W9-624063-0530	5,30			95	57	6,0
W9-624063-0540	5,40			95	57	6,0
W9-624063-0550	5,50			95	57	6,0
W9-624063-0560	5,60		M6	95	57	6,0

W9-624063-0570	5,70	M6x0,75	95	57	6,0
W9-624063-0580	5,80	M6x0,5	95	57	6,0
W9-624063-0590	5,90		95	57	6,0
W9-624063-0600	6,00	M7	95	57	6,0
W9-624063-0610	6,10		114	76	8,0
W9-624063-0620	6,20	M7x0,75	114	76	8,0
W9-624063-0630	6,30		114	76	8,0
W9-624063-0640	6,40		114	76	8,0

W9-624063-0650	6,50			114	76	8,0
W9-624063-0660	6,60		M7	114	76	8,0
W9-624063-0670	6,70	M7x0,75		114	76	8,0
W9-624063-0680	6,80	M8		114	76	8,0
W9-624063-0690	6,90			114	76	8,0
W9-624063-0700	7,00	M8x1		114	76	8,0
W9-624063-0710	7,10			114	76	8,0
W9-624063-0720	7,20	M8x0,75		114	76	8,0

W9-624063-0730	7,30		114	76	8,0
W9-624063-0740	7,40		114	76	8,0
W9-624063-0750	7,50		114	76	8,0
W9-624063-0760	7,60	M8x1	114	76	8,0
W9-624063-0770	7,70	M8x0,75	114	76	8,0
W9-624063-0780	7,80	M9	114	76	8,0
W9-624063-0790	7,90		114	76	8,0
W9-624063-0800	8,00	M9x1	114	76	8,0

W9-624063-0810	8,10			142	95	10,0
W9-624063-0820	8,20	M9x0,75		142	95	10,0
W9-624063-0830	8,30			142	95	10,0
W9-624063-0840	8,40			142	95	10,0
W9-624063-0850	8,50	M10		142	95	10,0
W9-624063-0860	8,60		M9x1	142	95	10,0
W9-624063-0870	8,70		M9x0,75	142	95	10,0
W9-624063-0880	8,80	M10x1,25		142	95	10,0

W9-624063-0890	8,90			142	95	10,0
W9-624063-0900	9,00	M10x1		142	95	10,0
W9-624063-0910	9,10			142	95	10,0
W9-624063-0920	9,20	M10x0,75		142	95	10,0
W9-624063-0930	9,30			142	95	10,0
W9-624063-0940	9,40			142	95	10,0
W9-624063-0950	9,50	M11		142	95	10,0
W9-624063-0960	9,60		M10x1	142	95	10,0

W9-624063-0970	9,70		M10x0,75	142	95	10,0
W9-624063-0980	9,80			142	95	10,0
W9-624063-0990	9,90			142	95	10,0
W9-624063-1000	10,00	M11x1		142	95	10,0
W9-624063-1010	10,10			162	114	12,0
W9-624063-1020	10,20	M12		162	114	12,0
W9-624063-1030	10,30			162	114	12,0
W9-624063-1040	10,40			162	114	12,0

W9-624063-1050	10,50	M12x1,5		162	114	12,0
W9-624063-1060	10,60		M11x1	162	114	12,0
W9-624063-1070	10,70			162	114	12,0
W9-624063-1080	10,80	M12x1,25		162	114	12,0
W9-624063-1090	10,90			162	114	12,0
W9-624063-1100	11,00	M12x1		162	114	12,0
W9-624063-1110	11,10			162	114	12,0
W9-624063-1120	11,20			162	114	12,0

W9-624063-1130	11,30		162	114	12,0
W9-624063-1140	11,40		162	114	12,0
W9-624063-1150	11,50		162	114	12,0
W9-624063-1160	11,60	M12x1	162	114	12,0
W9-624063-1170	11,70		162	114	12,0
W9-624063-1180	11,80		162	114	12,0
W9-624063-1190	11,90		162	114	12,0
W9-624063-1200	12,00	M14	162	114	12,0

W9-624063-1230	12,30		178	133	14,0
W9-624063-1250	12,50	M14x1,5	178	133	14,0
W9-624063-1280	12,80		178	133	14,0
W9-624063-1300	13,00	M14x1	178	133	14,0
W9-624063-1350	13,50		178	133	14,0
W9-624063-1380	13,80		178	133	14,0
W9-624063-1400	14,00	M16, M15x1	178	133	14,0
W9-624063-1450	14,50	M16x1,5	203	152	16,0

W9-624063-1480	14,80		203	152	16,0
W9-624063-1500	15,00	M16x1	203	152	16,0
W9-624063-1550	15,50	M18	203	152	16,0
W9-624063-1580	15,80		203	152	16,0
W9-624063-1600	16,00	M18x2	203	152	16,0
W9-624063-1650	16,50	M18x1,5	222	171	18,0
W9-624063-1680	16,80		222	171	18,0
W9-624063-1700	17,00	M18x1	222	171	18,0

W9-624063-1750	17,50	M20	222	171	18,0
W9-624063-1780	17,80		222	171	18,0
W9-624063-1800	18,00	M20x2	222	171	18,0
W9-624063-1850	18,50	M20x1,5	243	190	20,0
W9-624063-1900	19,00	M20x1	243	190	20,0
W9-624063-1950	19,50	M22	243	190	20,0
W9-624063-1980	19,80		243	190	20,0
W9-624063-2000	20,00	M22x2	243	190	20,0

Архангельск (8182)63-90-72
Астана (7172)727-132
Астрахань (8512)99-46-04
Барнаул (3852)73-04-60
Белгород (4722)40-23-64
Брянск (4832)59-03-52
Владивосток (423)249-28-31
Волгоград (844)278-03-48
Вологда (8172)26-41-59
Воронеж (473)204-51-73
Екатеринбург (343)384-55-89
Иваново (4932)77-34-06

Ижевск (3412)26-03-58
Иркутск (395)279-98-46
Казань (843)206-01-48
Калининград (4012)72-03-81
Калуга (4842)92-23-67
Кемерово (3842)65-04-62
Киров (8332)68-02-04
Краснодар (861)203-40-90
Красноярск (391)204-63-61
Курск (4712)77-13-04
Липецк (4742)52-20-81

Киргизия (996)312-96-26-47

Магнитогорск (3519)55-03-13
Москва (495)268-04-70
Мурманск (8152)59-64-93
Набережные Челны (8552)20-53-41
Нижний Новгород (831)429-08-12
Новокузнецк (3843)20-46-81
Новосибирск (383)227-86-73
Омск (3812)21-46-40
Орел (4862)44-53-42
Оренбург (3532)37-68-04
Пенза (8412)22-31-16

Россия (495)268-04-70

Пермь (342)205-81-47
Ростов-на-Дону (863)308-18-15
Рязань (4912)46-61-64
Самара (846)206-03-16
Санкт-Петербург (812)309-46-40
Саратов (845)249-38-78
Севастополь (8692)22-31-93
Симферополь (3652)67-13-56
Смоленск (4812)29-41-54
Сочи (862)225-72-31
Ставрополь (8652)20-65-13

Казахстан (772)734-952-31

Сургут (3462)77-98-35
Тверь (4822)63-31-35
Томск (3822)98-41-53
Тула (4872)74-02-29
Тюмень (3452)66-21-18
Ульяновск (8422)24-23-59
Уфа (347)229-48-12
Хабаровск (4212)92-98-04
Челябинск (351)202-03-61
Череповец (8202)49-02-64
Ярославль (4852)69-52-93