

Архангельск (8182)63-90-72  
Астана (7172)727-132  
Астрахань (8512)99-46-04  
Барнаул (3852)73-04-60  
Белгород (4722)40-23-64  
Брянск (4832)59-03-52  
Владивосток (423)249-28-31  
Волгоград (844)278-03-48  
Вологда (8172)26-41-59  
Воронеж (473)204-51-73  
Екатеринбург (343)384-55-89  
Иваново (4932)77-34-06

Ижевск (3412)26-03-58  
Иркутск (395)279-98-46  
Казань (843)206-01-48  
Калининград (4012)72-03-81  
Калуга (4842)92-23-67  
Кемерово (3842)65-04-62  
Киров (8332)68-02-04  
Краснодар (861)203-40-90  
Красноярск (391)204-63-61  
Курск (4712)77-13-04  
Липецк (4742)52-20-81

Киргизия (996)312-96-26-47

Магнитогорск (3519)55-03-13  
Москва (495)268-04-70  
Мурманск (8152)59-64-93  
Набережные Челны (8552)20-53-41  
Нижегород (831)429-08-12  
Новокузнецк (3843)20-46-81  
Новосибирск (383)227-86-73  
Омск (3812)21-46-40  
Орел (4862)44-53-42  
Оренбург (3532)37-68-04  
Пенза (8412)22-31-16

Россия (495)268-04-70

Пермь (342)205-81-47  
Ростов-на-Дону (863)308-18-15  
Рязань (4912)46-61-64  
Самара (846)206-03-16  
Санкт-Петербург (812)309-46-40  
Саратов (845)249-38-78  
Севастополь (8692)22-31-93  
Симферополь (3652)67-13-56  
Смоленск (4812)29-41-54  
Сочи (862)225-72-31  
Ставрополь (8652)20-65-13

Казахстан (772)734-952-31

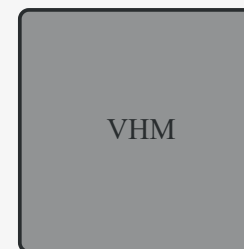
Сургут (3462)77-98-35  
Тверь (4822)63-31-35  
Томск (3822)98-41-53  
Тула (4872)74-02-29  
Тюмень (3452)66-21-18  
Ульяновск (8422)24-23-59  
Уфа (347)229-48-12  
Хабаровск (4212)92-98-04  
Челябинск (351)202-03-61  
Череповец (8202)49-02-64  
Ярославль (4852)69-52-93

<https://fanar.nt-rt.ru/> || [frk@nt-rt.ru](mailto:frk@nt-rt.ru)

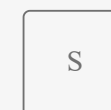
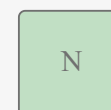
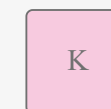
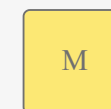
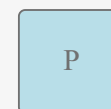
## X-Drill

General purpose solid carbide drills.  
Available 3xD and 5xD lengths.





Special flute shape ensures easy chip  
evacuation and high rigidity. This features  
provides the highest accuracy of machined  
holes and process safety.



## Application



# Variants

Variant		Working diameter tolerance $d_1$	Point angle	Execution standard
3xD VHM AT		m7	140°	DIN-6537
5xD VHM AT		m7	140°	DIN-6537
With chamfering part		m7		DIN-6537
X-Drill micro		h7	118°	DIN-6539

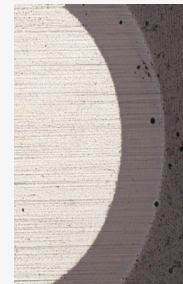
X-Drill 3xD VHM AT



## 3xD VHM AT

General purpose solid carbide drills.

### Protection



Tools are protected against wear and tear by AT coat developed by Fanar High Al content in AlTiN coat results in additional lubrication during the processing.

## Dimensions

Index	$\varnothing d_1$	For taps	For forming taps	$l_1$	$l_2$	$\varnothing d_2 h_6$
<b>W9-604X13-0300</b>	3,00			62	20	6,0
<b>W9-604X13-0310</b>	3,10			62	20	6,0
<b>W9-604X13-0320</b>	3,20			62	20	6,0
<b>W9-604X13-0325</b>	3,25		M3,5	62	20	6,0

<b>W9-604X13-0330</b>	3,30	M4		62	20	6,0
<b>W9-604X13-0340</b>	3,40			62	20	6,0
<b>W9-604X13-0350</b>	3,50	M4x0,5		62	20	6,0
<b>W9-604X13-0360</b>	3,60			62	20	6,0
<b>W9-604X13-0370</b>	3,70	M4,5	M4	62	20	6,0
<b>W9-604X13-0380</b>	3,80			66	24	6,0
<b>W9-604X13-0390</b>	3,90			66	24	6,0
<b>W9-604X13-0400</b>	4,00			66	24	6,0

<b>W9-604X13-0410</b>	4,10			66	24	6,0
<b>W9-604X13-0420</b>	4,20	M5	M4,5	66	24	6,0
<b>W9-604X13-0430</b>	4,30			66	24	6,0
<b>W9-604X13-0440</b>	4,40			66	24	6,0
<b>W9-604X13-0450</b>	4,50	M5x0,5		66	24	6,0
<b>W9-604X13-0460</b>	4,60	M5,5		66	24	6,0
<b>W9-604X13-0465</b>	4,65		M5	66	24	6,0
<b>W9-604X13-0470</b>	4,70			66	24	6,0

<b>W9-604X13-0480</b>	4,80			66	28	6,0
<b>W9-604X13-0490</b>	4,90			66	28	6,0
<b>W9-604X13-0500</b>	5,00	M6		66	28	6,0
<b>W9-604X13-0510</b>	5,10		M5,5	66	28	6,0
<b>W9-604X13-0520</b>	5,20	M6x0,75		66	28	6,0
<b>W9-604X13-0530</b>	5,30			66	28	6,0
<b>W9-604X13-0540</b>	5,40			66	28	6,0
<b>W9-604X13-0550</b>	5,50			66	28	6,0

<b>W9-604X13-0560</b>	5,60	M6	66	28	6,0
<b>W9-604X13-0570</b>	5,70		66	28	6,0
<b>W9-604X13-0580</b>	5,80		66	28	6,0
<b>W9-604X13-0590</b>	5,90		66	28	6,0
<b>W9-604X13-0600</b>	6,00	M7	66	28	6,0
<b>W9-604X13-0610</b>	6,10		79	34	8,0
<b>W9-604X13-0620</b>	6,20	M7x0,75	79	34	8,0
<b>W9-604X13-0630</b>	6,30		79	34	8,0



<b>W9-604X13-0640</b>	6,40		79	34	8,0
<b>W9-604X13-0650</b>	6,50		79	34	8,0
<b>W9-604X13-0660</b>	6,60	M7	79	34	8,0
<b>W9-604X13-0670</b>	6,70		79	34	8,0
<b>W9-604X13-0680</b>	6,80	M8	79	34	8,0
<b>W9-604X13-0690</b>	6,90		79	34	8,0
<b>W9-604X13-0700</b>	7,00	M8x1	79	34	8,0
<b>W9-604X13-0710</b>	7,10		79	41	8,0

<b>W9-604X13-0720</b>	7,20	M8x0,75		79	41	8,0
<b>W9-604X13-0730</b>	7,30			79	41	8,0
<b>W9-604X13-0740</b>	7,40			79	41	8,0
<b>W9-604X13-0745</b>	7,45		M8	79	41	8,0
<b>W9-604X13-0750</b>	7,50			79	41	8,0
<b>W9-604X13-0760</b>	7,60		M8x1	79	41	8,0
<b>W9-604X13-0770</b>	7,70			79	41	8,0
<b>W9-604X13-0780</b>	7,80	M9		79	41	8,0

<b>W9-604X13-0790</b>	7,90			79	41	8,0
<b>W9-604X13-0800</b>	8,00	M9x1		79	41	8,0
<b>W9-604X13-0810</b>	8,10			89	47	10,0
<b>W9-604X13-0820</b>	8,20	M9x0,75		89	47	10,0
<b>W9-604X13-0830</b>	8,30			89	47	10,0
<b>W9-604X13-0840</b>	8,40			89	47	10,0
<b>W9-604X13-0845</b>	8,45		M9	89	47	10,0
<b>W9-604X13-0850</b>	8,50	M10		89	47	10,0

<b>W9-604X13-0860</b>	8,60		M9x1	89	47	10,0
<b>W9-604X13-0870</b>	8,70		M9x0,75	89	47	10,0
<b>W9-604X13-0880</b>	8,80	M10x1,25		89	47	10,0
<b>W9-604X13-0890</b>	8,90			89	47	10,0
<b>W9-604X13-0900</b>	9,00	M10x1		89	47	10,0
<b>W9-604X13-0910</b>	9,10			89	47	10,0
<b>W9-604X13-0920</b>	9,20	M10x0,75		89	47	10,0
<b>W9-604X13-0930</b>	9,30			89	47	10,0

<b>W9-604X13-0935</b>	9,35		M10	89	47	10,0
<b>W9-604X13-0940</b>	9,40			89	47	10,0
<b>W9-604X13-0945</b>	9,45		M10x1,25	89	47	10,0
<b>W9-604X13-0950</b>	9,50	M11		89	47	10,0
<b>W9-604X13-0960</b>	9,60		M10x1	89	47	10,0
<b>W9-604X13-0970</b>	9,70		M10x0,75	89	47	10,0
<b>W9-604X13-0980</b>	9,80			89	47	10,0
<b>W9-604X13-0990</b>	9,90			89	47	10,0

<b>W9-604X13-1000</b>	10,00	M11x1	89	47	10,0	
<b>W9-604X13-1010</b>	10,10		102	55	12,0	
<b>W9-604X13-1020</b>	10,20	M12	102	55	12,0	
<b>W9-604X13-1030</b>	10,30		102	55	12,0	
<b>W9-604X13-1040</b>	10,40		102	55	12,0	
<b>W9-604X13-1050</b>	10,50	M12x1,5	102	55	12,0	
<b>W9-604X13-1060</b>	10,60		M11x1	102	55	12,0
<b>W9-604X13-1070</b>	10,70		102	55	12,0	

<b>W9-604X13-1080</b>	10,80	M12x1,25		102	55	12,0
<b>W9-604X13-1090</b>	10,90			102	55	12,0
<b>W9-604X13-1100</b>	11,00	M12x1		102	55	12,0
<b>W9-604X13-1110</b>	11,10			102	55	12,0
<b>W9-604X13-1120</b>	11,20			102	55	12,0
<b>W9-604X13-1125</b>	11,25		M12	102	55	12,0
<b>W9-604X13-1130</b>	11,30			102	55	12,0
<b>W9-604X13-1135</b>	11,35		M12x1,5	102	55	12,0

<b>W9-604X13-1140</b>	11,40		102	55	12,0
<b>W9-604X13-1145</b>	11,45	M12x1,25	102	55	12,0
<b>W9-604X13-1150</b>	11,50		102	55	12,0
<b>W9-604X13-1160</b>	11,60	M12x1	102	55	12,0
<b>W9-604X13-1170</b>	11,70		102	55	12,0
<b>W9-604X13-1180</b>	11,80		102	55	12,0
<b>W9-604X13-1190</b>	11,90		102	55	12,0
<b>W9-604X13-1200</b>	12,00	M14	102	55	12,0



<b>W9-604X13-1230</b>	12,30			107	60	14,0
<b>W9-604X13-1250</b>	12,50	M14x1,5		107	60	14,0
<b>W9-604X13-1280</b>	12,80	M14x1,25		107	60	14,0
<b>W9-604X13-1300</b>	13,00	M14x1	M14	107	60	14,0
<b>W9-604X13-1350</b>	13,50			107	60	14,0
<b>W9-604X13-1380</b>	13,80			107	60	14,0
<b>W9-604X13-1400</b>	14,00	M16; M15x1		107	60	14,0
<b>W9-604X13-1450</b>	14,50	M16x1,5		115	65	16,0

<b>W9-604X13-1480</b>	14,80				115	65	16,0
<b>W9-604X13-1500</b>	15,00	M16x1		M16	115	65	16,0
<b>W9-604X13-1535</b>	15,35			M16x1,5	115	65	16,0
<b>W9-604X13-1550</b>	15,50	M18			115	65	16,0
<b>W9-604X13-1580</b>	15,80				115	65	16,0
<b>W9-604X13-1600</b>	16,00	M18x2			115	65	16,0
<b>W9-604X13-1650</b>	16,50	M18x1,5			123	73	18,0
<b>W9-604X13-1680</b>	16,80			M18	123	73	18,0

<b>W9-604X13-1700</b>	17,00	M18x1		123	73	18,0
<b>W9-604X13-1735</b>	17,35		M18x1,5	123	73	18,0
<b>W9-604X13-1750</b>	17,50	M20		123	73	18,0
<b>W9-604X13-1780</b>	17,80			123	73	18,0
<b>W9-604X13-1800</b>	18,00	M20x2		123	73	18,0
<b>W9-604X13-1850</b>	18,50	M20x1,5		131	79	20,0
<b>W9-604X13-1880</b>	18,80		M20	131	79	20,0
<b>W9-604X13-1900</b>	19,00	M20x1		131	79	20,0

<b>W9-604X13-1935</b>	19,35		M20x1,5	131	79	20,0
<b>W9-604X13-1950</b>	19,50	M22		131	79	20,0
<b>W9-604X13-1980</b>	19,80			131	79	20,0
<b>W9-604X13-2000</b>	20,00	M22x2		131	79	20,0

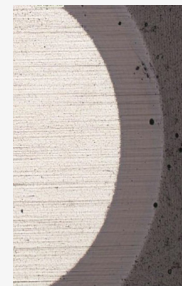
X-Drill 5xD VHM AT



## 5xD VHM AT

General purpose solid carbide drills.

### Protection



Tools are protected against wear and tear by AT coat developed by Fanar High Al content in AlTiN coat results in additional lubrication during the processing.

## Dimensions

Index	$\varnothing d_1$	For taps	For forming taps	$l_1$	$l_2$	$\varnothing d_2 h_6$
<b>W9-614X13-0300</b>	3,00			66	28	6,0
<b>W9-614X13-0310</b>	3,10			66	28	6,0
<b>W9-614X13-0320</b>	3,20			66	28	6,0
<b>W9-614X13-0325</b>	3,25		M3,5	66	28	6,0

<b>W9-614X13-0330</b>	3,30	M4		66	28	6,0
<b>W9-614X13-0340</b>	3,40			66	28	6,0
<b>W9-614X13-0350</b>	3,50	M4x0,5		66	28	6,0
<b>W9-614X13-0360</b>	3,60			66	28	6,0
<b>W9-614X13-0370</b>	3,70	M4,5	M4	66	28	6,0
<b>W9-614X13-0380</b>	3,80			74	36	6,0
<b>W9-614X13-0390</b>	3,90			74	36	6,0
<b>W9-614X13-0400</b>	4,00			74	36	6,0

<b>W9-614X13-0410</b>	4,10			74	36	6,0
<b>W9-614X13-0420</b>	4,20	M5	M4,5	74	36	6,0
<b>W9-614X13-0430</b>	4,30			74	36	6,0
<b>W9-614X13-0440</b>	4,40			74	36	6,0
<b>W9-614X13-0450</b>	4,50	M5x0,5		74	36	6,0
<b>W9-614X13-0460</b>	4,60	M5,5		74	36	6,0
<b>W9-614X13-0465</b>	4,65		M5	74	36	6,0
<b>W9-614X13-0470</b>	4,70			74	36	6,0



<b>W9-614X13-0480</b>	4,80			82	44	6,0
<b>W9-614X13-0490</b>	4,90			82	44	6,0
<b>W9-614X13-0500</b>	5,00	M6		82	44	6,0
<b>W9-614X13-0510</b>	5,10		M5,5	82	44	6,0
<b>W9-614X13-0520</b>	5,20	M6x0,75		82	44	6,0
<b>W9-614X13-0530</b>	5,30			82	44	6,0
<b>W9-614X13-0540</b>	5,40			82	44	6,0
<b>W9-614X13-0550</b>	5,50			82	44	6,0

<b>W9-614X13-0560</b>	5,60		M6	82	44	6,0
<b>W9-614X13-0570</b>	5,70			82	44	6,0
<b>W9-614X13-0580</b>	5,80			82	44	6,0
<b>W9-614X13-0590</b>	5,90			82	44	6,0
<b>W9-614X13-0600</b>	6,00		M7	82	44	6,0
<b>W9-614X13-0610</b>	6,10			91	53	8,0
<b>W9-614X13-0620</b>	6,20		M7x0,75	91	53	8,0
<b>W9-614X13-0630</b>	6,30			91	53	8,0

<b>W9-614X13-0640</b>	6,40		91	53	8,0
<b>W9-614X13-0650</b>	6,50		91	53	8,0
<b>W9-614X13-0660</b>	6,60	M7	91	53	8,0
<b>W9-614X13-0670</b>	6,70		91	53	8,0
<b>W9-614X13-0680</b>	6,80	M8	91	53	8,0
<b>W9-614X13-0690</b>	6,90		91	53	8,0
<b>W9-614X13-0700</b>	7,00	M8x1	91	53	8,0
<b>W9-614X13-0710</b>	7,10		91	53	8,0

<b>W9-614X13-0720</b>	7,20	M8x0,75	91	53	8,0
<b>W9-614X13-0730</b>	7,30		91	53	8,0
<b>W9-614X13-0740</b>	7,40		91	53	8,0
<b>W9-614X13-0745</b>	7,45	M8	91	53	8,0
<b>W9-614X13-0750</b>	7,50		91	53	8,0
<b>W9-614X13-0760</b>	7,60	M8x1	91	53	8,0
<b>W9-614X13-0770</b>	7,70		91	53	8,0
<b>W9-614X13-0780</b>	7,80	M9	91	53	8,0

<b>W9-614X13-0790</b>	7,90			91	53	8,0
<b>W9-614X13-0800</b>	8,00	M9x1		91	53	8,0
<b>W9-614X13-0810</b>	8,10			103	61	10,0
<b>W9-614X13-0820</b>	8,20	M9x0,75		103	61	10,0
<b>W9-614X13-0830</b>	8,30			103	61	10,0
<b>W9-614X13-0840</b>	8,40			103	61	10,0
<b>W9-614X13-0845</b>	8,45		M9	103	61	10,0
<b>W9-614X13-0850</b>	8,50	M10		103	61	10,0

<b>W9-614X13-0860</b>	8,60		M9x1	103	61	10,0
<b>W9-614X13-0870</b>	8,70		M9x0,75	103	61	10,0
<b>W9-614X13-0880</b>	8,80	M10x1,25		103	61	10,0
<b>W9-614X13-0890</b>	8,90			103	61	10,0
<b>W9-614X13-0900</b>	9,00	M10x1		103	61	10,0
<b>W9-614X13-0910</b>	9,10			103	61	10,0
<b>W9-614X13-0920</b>	9,20	M10x0,75		103	61	10,0
<b>W9-614X13-0930</b>	9,30			103	61	10,0

<b>W9-614X13-0935</b>	9,35		M10	103	61	10,0
<b>W9-614X13-0940</b>	9,40			103	61	10,0
<b>W9-614X13-0945</b>	9,45		M10x1,25	103	61	10,0
<b>W9-614X13-0950</b>	9,50	M11		103	61	10,0
<b>W9-614X13-0960</b>	9,60		M10x1	103	61	10,0
<b>W9-614X13-0970</b>	9,70		M10x0,75	103	61	10,0
<b>W9-614X13-0980</b>	9,80			103	61	10,0
<b>W9-614X13-0990</b>	9,90			103	61	10,0

<b>W9-614X13-1000</b>	10,00	M11x1		103	61	10,0
<b>W9-614X13-1010</b>	10,10			118	71	12,0
<b>W9-614X13-1020</b>	10,20	M12		118	71	12,0
<b>W9-614X13-1030</b>	10,30			118	71	12,0
<b>W9-614X13-1040</b>	10,40			118	71	12,0
<b>W9-614X13-1050</b>	10,50	M12x1,5		118	71	12,0
<b>W9-614X13-1060</b>	10,60		M11x1	118	71	12,0
<b>W9-614X13-1070</b>	10,70			118	71	12,0



<b>W9-614X13-1080</b>	10,80	M12x1,25		118	71	12,0
<b>W9-614X13-1090</b>	10,90			118	71	12,0
<b>W9-614X13-1100</b>	11,00	M12x1		118	71	12,0
<b>W9-614X13-1110</b>	11,10			118	71	12,0
<b>W9-614X13-1120</b>	11,20			118	71	12,0
<b>W9-614X13-1125</b>	11,25		M12	118	71	12,0
<b>W9-614X13-1130</b>	11,30			118	71	12,0
<b>W9-614X13-1135</b>	11,35		M12,1,5	118	71	12,0

<b>W9-614X13-1140</b>	11,40		118	71	12,0
<b>W9-614X13-1145</b>	11,45	M12x1,25	118	71	12,0
<b>W9-614X13-1150</b>	11,50		118	71	12,0
<b>W9-614X13-1160</b>	11,60	M12x1	118	71	12,0
<b>W9-614X13-1170</b>	11,70		118	71	12,0
<b>W9-614X13-1180</b>	11,80		118	71	12,0
<b>W9-614X13-1190</b>	11,90		118	71	12,0
<b>W9-614X13-1200</b>	12,00	M14	118	71	12,0

<b>W9-614X13-1230</b>	12,30				124	77	14,0
<b>W9-614X13-1250</b>	12,50	M14x1,5			124	77	14,0
<b>W9-614X13-1280</b>	12,80	M14x1,25			124	77	14,0
<b>W9-614X13-1300</b>	13,00	M14x1	M14		124	77	14,0
<b>W9-614X13-1350</b>	13,50				124	77	14,0
<b>W9-614X13-1380</b>	13,80				124	77	14,0
<b>W9-614X13-1400</b>	14,00	M16; M15x1			124	77	14,0
<b>W9-614X13-1450</b>	14,50	M16x1,5			133	83	16,0

<b>W9-614X13-1480</b>	14,80			133	83	16,0
<b>W9-614X13-1500</b>	15,00	M16x1	M16	133	83	16,0
<b>W9-614X13-1535</b>	15,35		M16x1,5	133	83	16,0
<b>W9-614X13-1550</b>	15,50	M18		133	83	16,0
<b>W9-614X13-1580</b>	15,80			133	83	16,0
<b>W9-614X13-1600</b>	16,00	M18x2		133	83	16,0
<b>W9-614X13-1650</b>	16,50	M18x1,5		143	93	18,0
<b>W9-614X13-1680</b>	16,80		M18	143	93	18,0

<b>W9-614X13-1700</b>	17,00	M18x1		143	93	18,0
<b>W9-614X13-1735</b>	17,35		M18x1,5	143	93	18,0
<b>W9-614X13-1750</b>	17,50	M20		143	93	18,0
<b>W9-614X13-1780</b>	17,80			143	93	18,0
<b>W9-614X13-1800</b>	18,00	M20x2		143	93	18,0
<b>W9-614X13-1850</b>	18,50	M20x1,5		153	101	20,0
<b>W9-614X13-1880</b>	18,80		M20	153	101	20,0
<b>W9-614X13-1900</b>	19,00	M20x1		153	101	20,0

<b>W9-614X13-1935</b>	19,35		M20x1,5	153	101	20,0
<b>W9-614X13-1950</b>	19,50	M22		153	101	20,0
<b>W9-614X13-1980</b>	19,80			153	101	20,0
<b>W9-614X13-2000</b>	20,00	M22x2		153	101	20,0

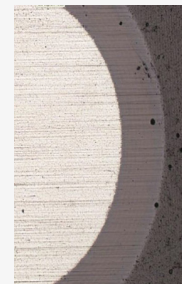
X-Drill With chamfering part



## With chamfering part

General purpose solid carbide drills.

### Protection



Tools are protected against wear and tear by AT coat developed by Fanar High Al content in AlTiN coat results in additional lubrication during the processing.

## Dimensions

Index	$\varnothing d_1$	For taps	For forming taps	$l_1$	$l_2$	$L_3$	$\varnothing d_2 h_6$
<b>W9-704010-0250</b>	2,50	M3		66	20	8,8	6,0
<b>W9-704010-0280</b>	2,80		M3	62	20	12	6,0
<b>W9-704010-0330</b>	3,30	M4		66	24	11,4	6,0
<b>W9-704010-0370</b>	3,70		M4	64	24	14	6,0



<b>W9-704010-0420</b>	4,20	M5		66	28	13,6	6,0
<b>W9-704010-0465</b>	4,65		M5	80	28	20	6,0
<b>W9-704010-0500</b>	5,00	M6		79	34	16,5	8,0
<b>W9-704010-0555</b>	5,55		M6	80	34	24	8,0
<b>W9-704010-0680</b>	6,80	M8		89	47	21	10,0
<b>W9-704010-0745</b>	7,45		M8	80	47	30	10,0
<b>W9-704010-0850</b>	8,50	M10		102	55	25,5	12,0
<b>W9-704010-0930</b>	9,30		M10	90	55	40	12,0

<b>W9-704010-1020</b>	10,20	M12		107	60	30	14,0
<b>W9-704010-1120</b>	11,20		M12	100	60	45	14,0
<b>W9-704010-1200</b>	12,00	M14		115	65	34,5	16,0
<b>W9-704010-1400</b>	14,00	M16		123	73	38,5	18,0

X-Drill micro



## **X-Drill micro**

General purpose solid carbide drills.

# Dimensions

Index	$\varnothing d_1$	For taps	For forming taps	$l_1$	$l_2$
<b>W9-801014-0075</b>	0,75	M1		22	6
<b>W9-801014-0085</b>	0,85	M1,1		24	6
<b>W9-801014-0090</b>	0,90		M1	24	7
<b>W9-801014-0095</b>	0,95	M1,2		24	7
<b>W9-801014-0100</b>	1,00		M1,1	26	7

<b>W9-801014-0110</b>	1,10	M1,4		28	8
<b>W9-801014-0125</b>	1,25	M1,6		30	9
<b>W9-801014-0128</b>	1,28		M1,4	30	9
<b>W9-801014-0135</b>	1,35	M1,7		30	9
<b>W9-801014-0145</b>	1,45	M1,8		32	10
<b>W9-801014-0147</b>	1,47		M1,6	32	10
<b>W9-801014-0157</b>	1,57		M1,7	32	10
<b>W9-801014-0160</b>	1,60	M2		34	11

<b>W9-801014-0167</b>	1,67		M1,8	34	11
<b>W9-801014-0175</b>	1,75	M2,2		34	11
<b>W9-801014-0185</b>	1,85		M2	36	12
<b>W9-801014-0190</b>	1,90	M2,3		36	12
<b>W9-801014-0200</b>	2,00			38	12
<b>W9-801014-0203</b>	2,03		M2,2	38	12
<b>W9-801014-0205</b>	2,05	M2,5		38	12
<b>W9-801014-0210</b>	2,10			38	12

<b>W9-801014-0215</b>	2,15	M2,6	M2,3	38	12
<b>W9-801014-0220</b>	2,20			40	13
<b>W9-801014-0230</b>	2,30			40	13
<b>W9-801014-0233</b>	2,33		M2,5	40	13
<b>W9-801014-0240</b>	2,40			43	14
<b>W9-801014-0243</b>	2,43		M2,6	43	14
<b>W9-801014-0250</b>	2,50	M3		43	14
<b>W9-801014-0260</b>	2,60			43	14

<b>W9-801014-0270</b>	2,70			46	16
<b>W9-801014-0280</b>	2,80		M3	46	16
<b>W9-801014-0290</b>	2,90	M3,5		46	16

Архангельск (8182)63-90-72  
Астана (7172)727-132  
Астрахань (8512)99-46-04  
Барнаул (3852)73-04-60  
Белгород (4722)40-23-64  
Брянск (4832)59-03-52  
Владивосток (423)249-28-31  
Волгоград (844)278-03-48  
Вологда (8172)26-41-59  
Воронеж (473)204-51-73  
Екатеринбург (343)384-55-89  
Иваново (4932)77-34-06

Ижевск (3412)26-03-58  
Иркутск (395)279-98-46  
Казань (843)206-01-48  
Калининград (4012)72-03-81  
Калуга (4842)92-23-67  
Кемерово (3842)65-04-62  
Киров (8332)68-02-04  
Краснодар (861)203-40-90  
Красноярск (391)204-63-61  
Курск (4712)77-13-04  
Липецк (4742)52-20-81

Киргизия (996)312-96-26-47

Магнитогорск (3519)55-03-13  
Москва (495)268-04-70  
Мурманск (8152)59-64-93  
Набережные Челны (8552)20-53-41  
Нижний Новгород (831)429-08-12  
Новокузнецк (3843)20-46-81  
Новосибирск (383)227-86-73  
Омск (3812)21-46-40  
Орел (4862)44-53-42  
Оренбург (3532)37-68-04  
Пенза (8412)22-31-16

Россия (495)268-04-70

Пермь (342)205-81-47  
Ростов-на-Дону (863)308-18-15  
Рязань (4912)46-61-64  
Самара (846)206-03-16  
Санкт-Петербург (812)309-46-40  
Саратов (845)249-38-78  
Севастополь (8692)22-31-93  
Симферополь (3652)67-13-56  
Смоленск (4812)29-41-54  
Сочи (862)225-72-31  
Ставрополь (8652)20-65-13

Казахстан (772)734-952-31

Сургут (3462)77-98-35  
Тверь (4822)63-31-35  
Томск (3822)98-41-53  
Тула (4872)74-02-29  
Тюмень (3452)66-21-18  
Ульяновск (8422)24-23-59  
Уфа (347)229-48-12  
Хабаровск (4212)92-98-04  
Челябинск (351)202-03-61  
Череповец (8202)49-02-64  
Ярославль (4852)69-52-93

<https://fanar.nt-rt.ru/> || [frk@nt-rt.ru](mailto:frk@nt-rt.ru)